



Info

General Director's Dashboard



No Role Selected



Filters

SanitORAL⁺



SanitORAL⁺ Dashboard

Getting Started

User Stories

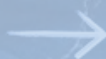
Data Workflow

How to update your data



Info

General Director's Dashboard



No Role Selected



Filters

SanitOR/X



I'm Giulia Governatori, and I created this dashboard.

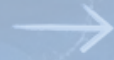
I'm here to quickly and clearly show you
how to use it at its best.

NEXT»



Info

General Director's Dashboard



No Role Selected



Filters

Project Type

All

Phase

All

Region

All

Country

All

Clear Selection



First of all, here you have access to the Filters menu, which is always available.

The filters you apply will remain active throughout the entire dashboard, unless you reset them by clicking this button.

Please note: on different pages, you may find additional filters. The ones shown here are only the most common.

NEXT >>



Info

National Director's Dashboard



France

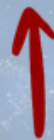
Selected

Filters

SanitOR/X



Charts



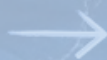
The title displays your role and geographical area, which determines the data range you can access.

NEXT >>



Info

General Director's Dashboard



No Role Selected



Filters

SanitOR/X



Info



Alerts



Gantt



Q&A



Map



Charts

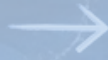


This dashboard contains 6 different pages.
Let's go through them together.

NEXT »



Info



Info



SanitORAL⁺ Dashboard

Getting Started

User Stories

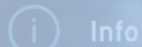
Data Workflow

How to update your data

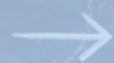


On the first page, "Info", you have access to this tutorial and all the information you need about the dashboard.

NEXT »



Info



Alerts

On these range, there are

365 phases that need attention

Click on a phase below for more details

214

Over Budget

96

Less Deliverables

159

Delayed



Filter By Alert

All Alerts

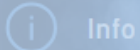


On the second page, "Alerts", you will find all the project phases under your responsibility that exceed one of your indicators by more than 15% and require your attention (***budget, delay, deliverables***).

Here you also have an extra filter that allows you to filter alerts by issue type.

At the top, you can see the number of phases grouped by issue.

NEXT»»



Info

General Director's Dashboard



No Role Selected

Filters

SanitOR/X



Alerts

You have selected:

The Phase of Deployment
of Project N. 59 (IT) in Hongrie:

They have spent

-20%

more than planned.

They have delivered

3%

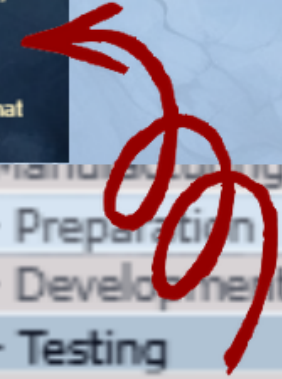
less than planned.

They have a delay of

46%

compared to what
was planned.

100 - Phase B - Preparation
100 - Phase C - Development
100 - Phase D - Testing
101 - Phase A - Initiation
101 - Phase D - Testing



The table shows only the phases with issues exceeding 15% in at least one of the three indicators.

By clicking on a specific phase, the text above will update to display the related values and affected indicators.

On the right side, you can select one of 4 charts

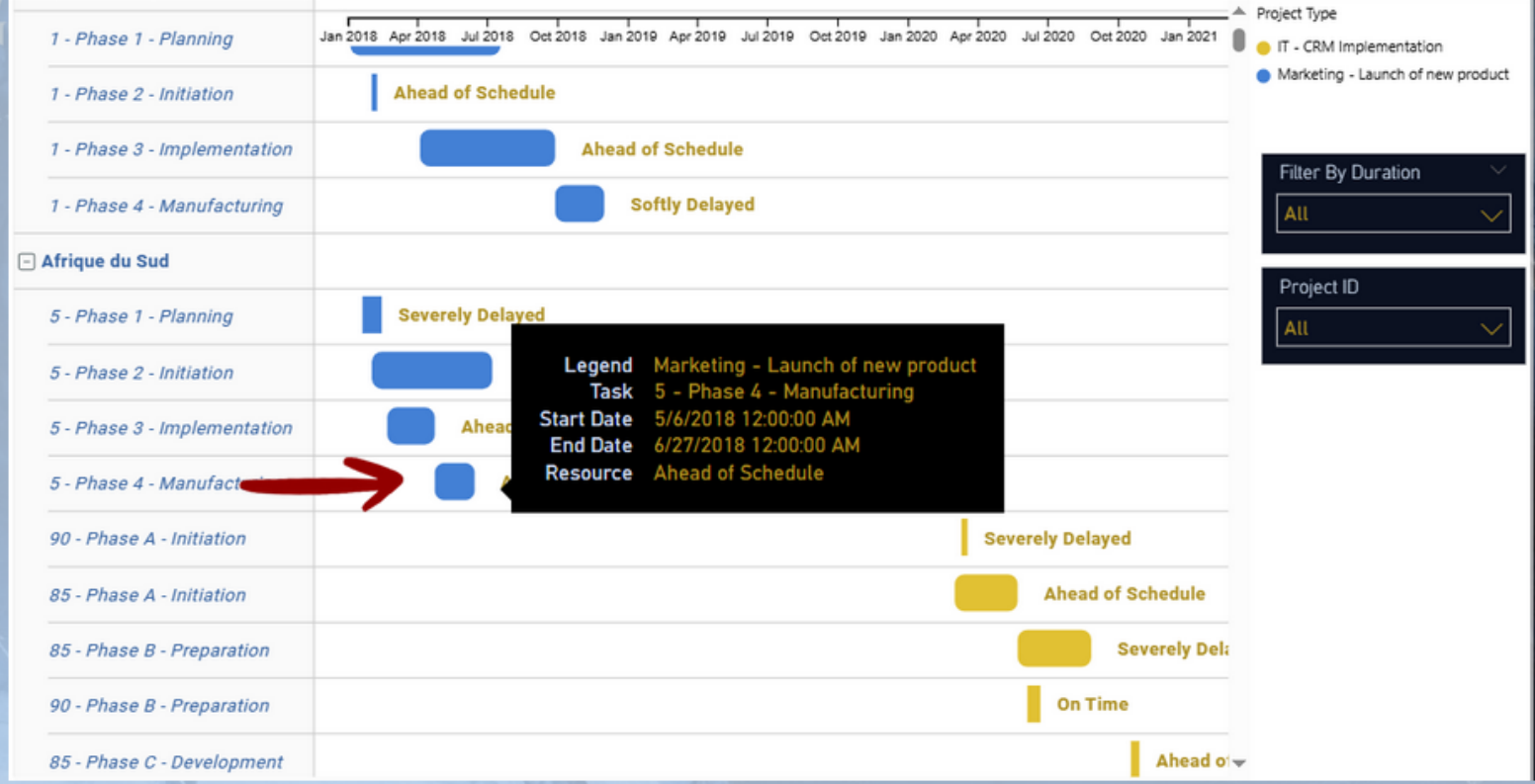


% Issues Chart Pie Chart Treemap

Choose your visualization

NEXT >>

Project Progress & Delays Gantt



Project Type

- IT - CRM Implementation
- Marketing - Launch of new product

Filter By Duration

All

Project ID

All



On the third page, "Gantt", you'll also find additional filters - by Project and by adherence to the planned schedule (e.g. delayed, on time, etc.). Hovering over the lines provides extra details about each phase.

NEXT >>

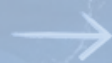
Info
Gantt





Info

General Director's Dashboard



No Role Selected

Filters

SanitOR/X



Q&A



Ask a question about your data

Try one of these to get started

region by no issues

region by issues cost

region by delay

top region by alert for less deliverables

top countries by alert for less deliverables

Show all suggestions



"Q&A" is the page where you can create personalized visualizations based on the data. Just type what you want to see and how you want to see it in the text box, then submit your request.

NEXT >>

Info

Map

All Alerts Over Budget Less Deliverables Delayed

COUNTRY	→	France
REGION	↔	Europe
ALERTS	↔	16 (80%)
Phases OK	↔	4 (20%)
Over Budget	↔	8
Less Deliverables	↔	9
Delayed	↔	6
TOT Projects	↔	4
TOT Phases	↔	20

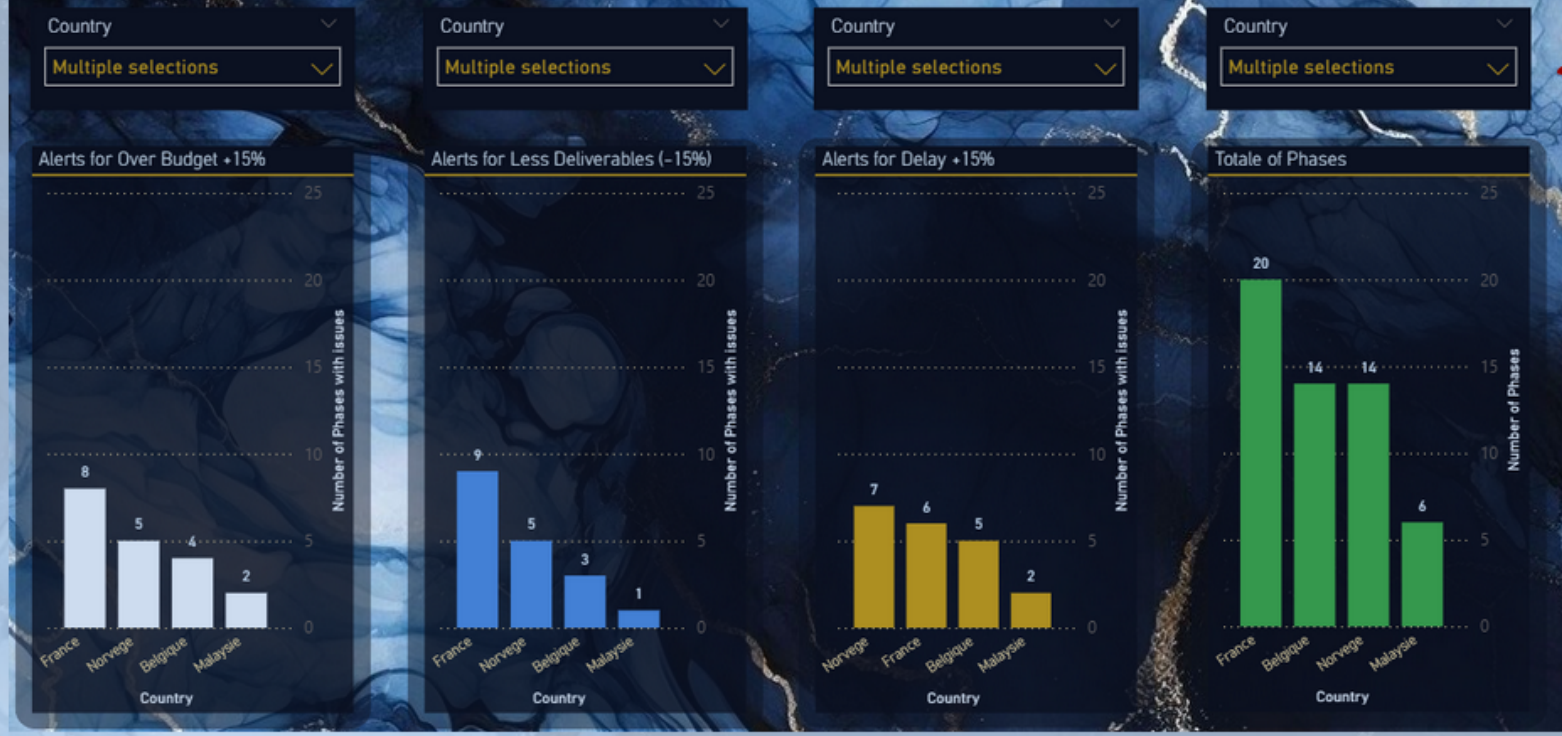


On the "Map" page, you'll also find extra filters to display the map based on the three indicators. Please note that you'll only see data for the region under your responsibility.

If you hover over a country, you'll see additional information.

NEXT >>

Multiple Selections with CTRL + click



The "Charts" page was designed to allow directors to easily compare countries across the 3 key indicators: each slicer selects the countries specifically for its corresponding chart. For the role of National Directors, it will remain a simple view displaying the indicators of their own country.

NEXT >>



Info

General Director's Dashboard



No Role Selected



Filters

SanitOR/X



Thank you for your time.
Don't hesitate to revisit this tutorial whenever you need.



EXIT >>



Info



No Role Selected



Filters



User Stories

General Director

Regional Director

National Director



Info

General Director's Dashboard



No Role Selected

Filters

SanitORAL



User Stories



General Director

En tant que directeur général, je souhaite être alerté si un projet dépasse de 15 % le budget prévu, prend un retard équivalent sur les délais ou accuse un déficit similaire dans la livraison des livrables, afin d'agir rapidement

En tant que directeur général, je souhaite obtenir une vue d'ensemble de la performance des projets, par typologie (IT ou Marketing) et par pays, afin de pouvoir décider de leur arrêt ou de leur poursuite.

En tant que directeur général, je souhaite pouvoir filtrer les données globales par région et par pays, en fonction de la phase et de la typologie du projet (pour IT ou Marketing), afin d'obtenir des informations détaillées.



Info

General Director's Dashboard



No Role Selected



Filters

SanitORAL



User Stories



Regional Director

En tant que directeur régional, je souhaite suivre la performance des projets dans ma région et recevoir une alerte lorsqu'un indicateur clé (coût, respect des deadlines ou livrables) présente un écart d'au moins 15 % par rapport aux prévisions, afin d'intervenir auprès des directeurs de pays.

En tant que directeur régional, je souhaite comparer la performance des projets entre les différents pays de ma région, en analysant les écarts de coûts, délais et livrables, pour identifier précisément les zones nécessitant une intervention corrective.

En tant que directeur régional, je souhaite filtrer les projets par phase, par typologie (IT ou Marketing) et par pays, afin d'obtenir une vue détaillée qui me permette de comprendre à quel stade se trouvent les projets et d'identifier les phases problématiques.



Info

General Director's Dashboard



No Role Selected



Filters

SanitORAL



User Stories



National Director

En tant que directeur de pays, je souhaite accéder à une vue détaillée des indicateurs clés (coût, délais, livrables) de mes projets et recevoir des alertes lorsque l'écart dépasse 15 % par rapport aux prévisions, afin de prendre des mesures correctives en temps réel.

En tant que directeur de pays, je souhaite visualiser l'avancement des livrables pour chaque phase de mes projets, en comparant les valeurs réelles aux prévisions, afin de m'assurer que les objectifs de production sont atteints.

En tant que directeur de pays, je souhaite avoir accès à des données granulaires par phase et par indicateur, ainsi qu'à des analyses comparatives par rapport aux prévisions, afin d'intervenir efficacement et de réajuster les ressources si nécessaire.



Info



No Role Selected



Filters



Data Workflow Overview

UML

Power Query Editor



Info

General Director's Dashboard



No Role Selected

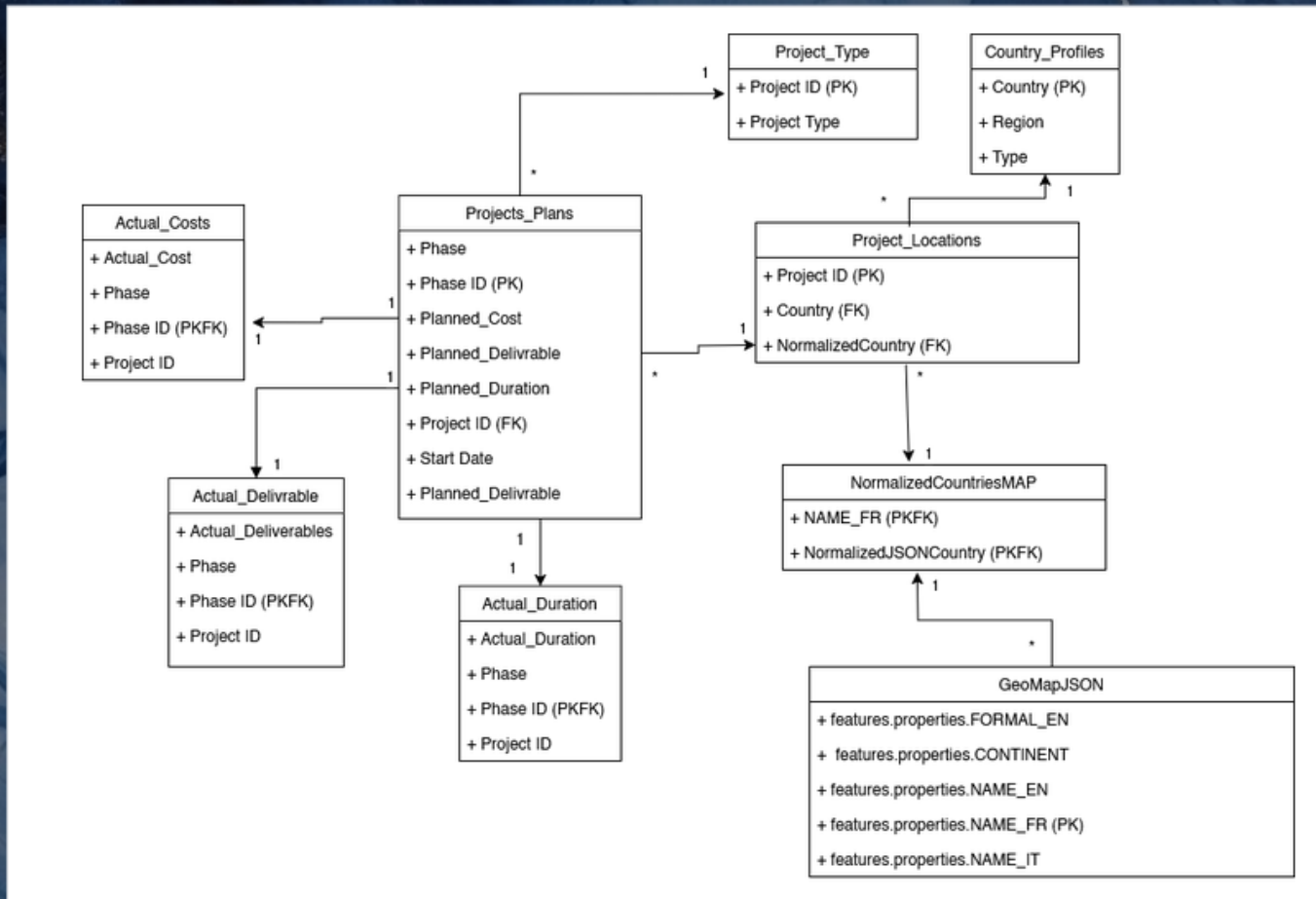
Filters



Data Workflow Overview



UML





Info

General Director's Dashboard



No Role Selected



Filters

SanitORAL



Data Workflow Overview



Power Query Editor

PROPERTIES
Name
Projects_Plans

All Properties

APPLIED STEPS

- Source
- Navigation
- FilterNullAndWhitespace
- Removed Bottom Rows
- Removed Top Rows
- Promoted Headers
- Changed Type
- Added Custom
- Reordered Columns

PROPERTIES
Name
Project_Type

All Properties

APPLIED STEPS

- Source
- Navigation
- FilterNullAndWhitespace
- Removed Bottom Rows
- Removed Top Rows
- Promoted Headers
- Changed Type
- Added Custom
- Reordered Columns

PROPERTIES
Name
Actual_Costs

All Properties

APPLIED STEPS

- Source
- Navigation
- FilterNullAndWhitespace
- Removed Bottom Rows
- Removed Top Rows
- Promoted Headers
- Changed Type
- Renamed Column
- Added Custom
- Reordered Columns

PROPERTIES
Name
Actual_Duration

All Properties

APPLIED STEPS

- Source
- Navigation
- FilterNullAndWhitespace
- Removed Bottom Rows
- Removed Top Rows
- Promoted Headers
- Changed Type
- Renamed Column
- Added Custom
- Reordered Columns

PROPERTIES
Name
Actual_Delivable

All Properties

APPLIED STEPS

- Source
- Navigation
- FilterNullAndWhitespace
- Removed Bottom Rows
- Removed Top Rows
- Promoted Headers
- Changed Type
- Renamed Column
- Added Custom
- Reordered Columns

This table contains 'Country', 'Region', and 'Type' information. It filters out empty rows and irrelevant columns, ensuring only relevant data remains. After promoting the headers, it normalizes the data type for 'Country', 'Region', and 'Type' to text. This table is useful for providing additional metadata about countries, such as their region and type, which may be necessary for further analysis or mapping.

PROPERTIES
Name
Projects_Locations

All Properties

APPLIED STEPS

- Source
- Navigation
- FilterNullAndWhitespace
- Removed Bottom Rows
- Removed Top Rows
- Promoted Headers
- Changed Type
- RemoveDiacritics
- Added Normalized Country
- Merged Queries
- Expanded NormalizedCountry...

PROPERTIES
Name
Country_Profiles

All Properties

APPLIED STEPS

- Source
- Navigation
- FilterNullAndWhitespace
- Removed Top Rows
- Removed Other Columns
- Removed Blank Rows
- Promoted Headers
- Changed Type

PROPERTIES
Name
GeoMapJSON

All Properties

APPLIED STEPS

- Source
- Converted to Table
- Expanded features
- Expanded features1
- Expanded features.geometry
- Expanded features.geometry....
- Expanded features.properties
- Changed Type
- Expanded features.geometry....
- Removed Columns
- Reordered Columns
- Removed Columns1

PROPERTIES
Name
NormalizedCountriesMAP

All Properties

APPLIED STEPS

- RemoveDiacritics
- JsonSource
- ObjectsRecord
- FirstObjectName
- FirstObject
- Geometries
- GeometriesTable
- ExpandedGeometries
- ExpandedProperties
- ExpandedProperties_Typed
- Json_Normalized





Info



How to Update Your Data

This guide explains how to update your data on Power BI using your SharePoint file. Follow the steps that match your situation. If you have any questions during the update process, please let us know, and we'll be happy to assist!

Updating Existing Data (Same Database)

Adding Complementary Data (New Tables)

Adding a New Role (Email User)



Info



⏪ How to Update Your Data



Scenario 1: Updating Existing Data (Same Database)

Purpose: Add new records or update existing records in your current data file.

Step 1: Locate the File

- The file is stored on SharePoint at:

https://datapsychoses-my.sharepoint.com/personal/giuliagovernatori_datapsychoses_onmicrosoft_com/Documents/Donnees_Sanitoral.xlsx

Step 2: Edit the File

- Download or open the file online: Use SharePoint or OneDrive to open the file.
- Make your changes: add new rows of data, or update existing records as required.
- Save and close the file: Make sure the updated version is saved online.

Step 3: Refresh Your Power BI Report

- Open your report in **Power BI Service**.
- Click the **Refresh** button to load the latest data from the updated file.

What this does: Power BI downloads the newest data from SharePoint, reflecting your recent changes automatically.



Info



⏪ How to Update Your Data



Scenario 2: Adding Complementary Data (New Tables)

Purpose: Integrate a new set of information into your model without altering the existing data structure.

Step 1: Prepare the Complementary Data

- Create a new file (for example, an Excel file) with the additional information (e.g., feedback, additional metrics, or supplemental details).
- Ensure that the structure is clear and that any key fields needed to connect with your main data set are available.

Step 2: Upload the New File to SharePoint

- Save and upload the new file to SharePoint in the same or a designated folder.
- Get the new file's direct link. For example, if the new file is named `Supplemental_Data.xlsx`, it should be uploaded and available via a URL formatted similarly to:
https://datapsychoses-my.sharepoint.com/personal/giuliagovernatori_datapsychoses_onmicrosoft_com/Documents/Supplemental_Data.xlsx

Step 3: Update Your Power BI Report

- Open **Power BI Desktop** and go to Transform Data.
- Click **Get Data > Web** and use the direct URL to the new file. (For example, using the download link format with `download.aspx` if required).
- Import the new table(s) into your Power BI model.
- Create any necessary relationships between the new table and your existing data tables (typically using a key field).
- Save and publish your updated report.



Info

General Director's Dashboard



No Role Selected

Filters

SanitORAL



How to Update Your Data



Adding a New Role

Purpose: Create a new role and attribute it to an email

Manage security roles

Create new security roles and use filters to define row-level data restrictions.

Roles

[+ New](#)

- 1General Director
- 2Reg - Asia Pacific
- 2Reg - Central/East...
- 2Reg - North and La...
- 2Reg - Western Eur...
- 3Nat - Belgium
- 3Nat - Canada
- 3Nat - Colombia
- 3Nat - Croatia
- 3Nat - Czech Repub...
- 3Nat - Denmark

Select tables

- Actual_Costs
- Actual_Delivra...
- Actual_Duration
- Country_Profiles
- GeoMapJSON
- NormalizedCo...
- Project_Type
- Projects_Locati...
- Projects_Plans
- Roles
- SelectionTable

Filter data

+ New Select all Delete Group Ungroup

Switch to DAX editor

Show data if **All** of these rules are true

Column	Condition	Value
<input type="checkbox"/> Role	Equals	1. General Director
+ New		
		2. Regional Director
		3. National Director

Save Close

This guide explains how to create a new user role to manage data access based on job responsibilities (e.g. General Director, Regional Director, or National Director).

Follow these simple steps to set up role-level security.

Step 1: Define the Role in Power BI Desktop

- Open your report in **Power BI Desktop**.
- Click on **Modeling** in the top ribbon, then select **Manage Roles**.
- Click **Create (New)** to add a new role.
- Choose the table named **Role** and apply a filter where the role value is:

- 1 for **General Director**
- 2 for **Regional Director**
- 3 for **National Director**

This defines which type of user will see which subset of the data.

NEXT >>



Info

General Director's Dashboard



No Role Selected

Filters

SanitORAL



How to Update Your Data



Adding a New Role

Purpose: Create a new role and attribute it to an email

This screenshot shows the 'Manage Roles' interface. On the left, a list of roles is displayed, with '3Nat - Canada' selected and underlined. The main area shows a filter configuration for the 'Country_Profiles' table. The filter is set to 'Country' equals 'Canada'. A '+ New' button is visible below the filter.

This screenshot shows the 'Manage Roles' interface with a different filter configuration. The left list shows '2Reg - Western Eur...' selected and underlined. The main area shows a filter for the 'Country_Profiles' table, set to 'Region' equals 'Western Europe'. A table header is visible above the filter with columns for 'Column', 'Condition', and 'Value'. A '+ New' button is visible below the filter.

Step 2: Apply Geographic Filters (If Needed)

- Still in the **Manage Roles** window, select the table named `Country_Profiles`.
- Apply a filter based on the type of director:

General Director: no geographic filter is needed (access to all data).

Regional Director: filter by the region they are responsible for.

National Director: filter by the specific country

« PREV

NEXT »



Info

General Director's Dashboard



No Role Selected



Filters

SanitORAL

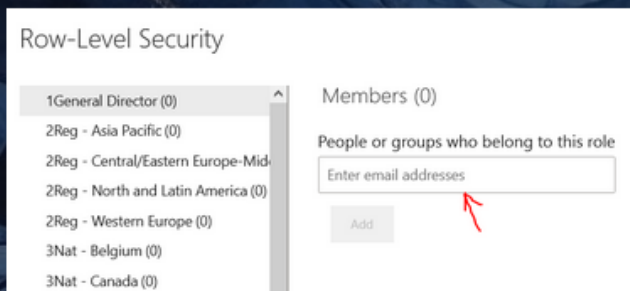
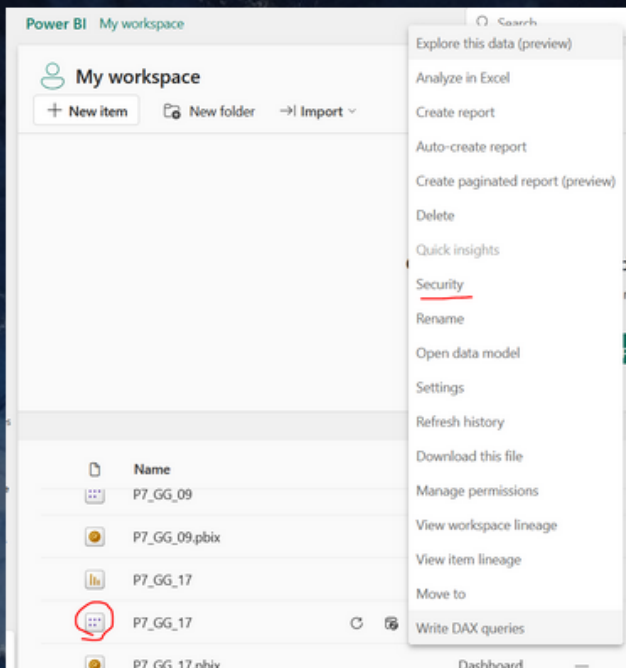


How to Update Your Data



Adding a New Role

Purpose: Create a new role and attribute it to an email



Step 3: Assign Users to Roles in Power BI Service

- Go to **Power BI Service** and open the **Workspace** where your report is published.
- Find your report or dataset, click the **ellipsis (...)** next to the file name, and choose **Security**.
- In the Security window:

1. Select the appropriate role.
2. Add the user's **email address** (e.g. the director's Microsoft 365 email).
3. Save your changes.

This step connects the role logic to specific people.

« PREV

General Director's Dashboard

→ No Role Selected

Filters

SanitORAL



Alerts



On these range, there are

365 phases that need attention

Click on a phase below for more details

214

Over Budget

96

Less Deliverables

159

Delayed

Filter By Alert

All Alerts

29.81%

Phases of this selection are OK!

% Issues Chart

Pie Chart

Treemap

Phase ID	Planned Deliverables	Actual Deliverables	Planned Duration	Actual Duration	Planned Cost	Actual Cost
99 - Phase F - Post-deployment	5	5	34	55	1400	1600
99 - Phase E - Deployment	22	19	134	147	53000	30700
99 - Phase D - Testing	31	27	102	76	2800	15400
99 - Phase C - Development	11	9	130	54	10500	13500
99 - Phase B - Preparation	14	14	32	16	8100	16000
99 - Phase A - Initiation	24	22	64	83	400	400
98 - Phase F - Post-deployment	19	19	143	144	1400	1900
98 - Phase E - Deployment	13	12	118	140	32000	41900
98 - Phase D - Testing	8	8	21	40	2800	18700
98 - Phase C - Development	17	14	147	100	10500	13800
98 - Phase B - Preparation	27	25	116	37	8100	11100
97 - Phase F - Post-deployment	8	7	32	23	1400	1800
97 - Phase D - Testing	6	5	53	80	2800	14200
97 - Phase C - Development	9	8	125	76	10500	13900
97 - Phase B - Preparation	29	26	150	206	8100	9400
97 - Phase A - Initiation	3	3	86	60	400	500
96 - Phase D - Testing	29	28	193	100	2800	15100
96 - Phase B - Preparation	14	13	75	68	8100	12400
96 - Phase A - Initiation	23	22	15	22	400	300
95 - Phase D - Testing	19	18	93	85	2800	18600
95 - Phase B - Preparation	30	29	49	27	8100	12300
95 - Phase A - Initiation	20	20	28	45	400	400
94 - Phase F - Post-deployment	6	5	46	53	2800	3100
94 - Phase E - Deployment	7	7	83	110	15000	15300

Choose your visualization

General Director's Dashboard

No Role Selected

Filters

SanitORAL



Alerts



You have selected:

The Phase of Testing

of Project N. 93 (IT) in Danmark:

They have spent

614%

more than planned.

They have delivered

8%

less than planned.

They have a delay of

1%

compared to what was planned.

Filter By Alert

All Alerts

0

Phases of this selection are OK!



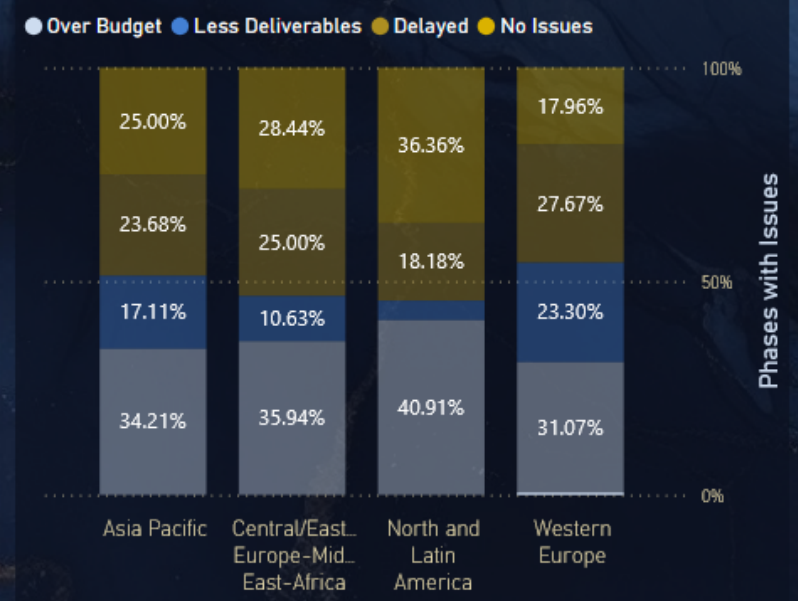
Phase ID	Planned Deliverables	Actual Deliverables	Planned Duration	Actual Duration	Planned Cost	Actual Cost
97 - Phase A - Initiation	3	3	86	60	400	500
96 - Phase D - Testing	29	28	193	100	2800	15100
96 - Phase B - Preparation	14	13	75	68	8100	12400
96 - Phase A - Initiation	23	22	15	22	400	300
95 - Phase D - Testing	19	18	93	85	2800	18600
95 - Phase B - Preparation	30	29	49	27	8100	12300
95 - Phase A - Initiation	20	20	28	45	400	400
94 - Phase F - Post-deployment	6	5	46	53	2800	3100
94 - Phase E - Deployment	7	7	83	110	45000	45300
94 - Phase D - Testing	10	10	132	130	5600	17600
94 - Phase C - Development	29	25	110	144	21000	22000
94 - Phase B - Preparation	30	29	16	25	16100	18200
93 - Phase F - Post-deployment	11	10	28	37	1400	1700
93 - Phase E - Deployment	27	26	104	132	51000	36500
93 - Phase D - Testing	14	13	159	160	2800	20000
93 - Phase C - Development	10	9	45	60	10500	12900
93 - Phase B - Preparation	27	26	188	104	8100	10200
92 - Phase D - Testing	30	26	102	113	2800	14900
92 - Phase C - Development	7	6	191	164	10500	11900
92 - Phase B - Preparation	24	20	45	33	8100	8400
92 - Phase A - Initiation	13	12	77	96	400	400
91 - Phase F - Post-deployment	19	17	72	92	900	900
91 - Phase D - Testing	25	25	35	58	1900	20000
91 - Phase A - Initiation	7	6	54	46	200	200

% Issues Chart

Pie Chart

Treemap

Issues by Region



General Director's Dashboard

→ No Role Selected

Filters

SanitORAL



Alerts



On these range, there are

365 phases that need attention

Click on a phase below for more details

214

Over Budget

96

Less Deliverables

159

Delayed

Filter By Alert

All Alerts

29.81%

Phases of this selection are OK!

% Issues Chart

Pie Chart

Treemap

Phase ID	Planned Deliverables	Actual Deliverables	Planned Duration	Actual Duration	Planned Cost	Actual Cost
86 - Phase B - Preparation	10	7 ❌	193	128 ✅	5400	6400 ❌
86 - Phase A - Initiation	18	10 ❌	36	64 ❌	200	300 ❌
85 - Phase F - Post-deployment	26	15 ❌	197	172 ✅	1400	1600 ⚠️
85 - Phase E - Deployment	25	16 ❌	109	135 ❌	70000	41100 ✅
85 - Phase D - Testing	29	18 ❌	123	146 ❌	2800	22100 ❌
85 - Phase C - Development	27	18 ❌	31	11 ✅	10500	12700 ❌
85 - Phase B - Preparation	4	3 ❌	76	96 ❌	8100	9200 ⚠️
85 - Phase A - Initiation	21	14 ❌	187	82 ✅	400	400 ✅
84 - Phase F - Post-deployment	12	7 ❌	115	135 ❌	900	900 ✅
84 - Phase E - Deployment	17	9 ❌	5	12 ❌	59000	56200 ✅
84 - Phase D - Testing	9	5 ❌	30	53 ❌	1900	13800 ❌
84 - Phase C - Development	31	17 ❌	109	138 ❌	7000	6500 ✅
84 - Phase B - Preparation	8	6 ❌	46	52 ⚠️	5400	5000 ✅
84 - Phase A - Initiation	7	5 ❌	191	63 ✅	200	200 ✅
83 - Phase F - Post-deployment	7	4 ❌	174	110 ✅	900	1000 ⚠️
83 - Phase E - Deployment	22	13 ❌	81	76 ✅	62000	20300 ✅
83 - Phase D - Testing	29	17 ❌	112	121 ⚠️	1900	18600 ❌
83 - Phase C - Development	21	14 ❌	185	140 ✅	7000	7500 ⚠️
83 - Phase B - Preparation	18	12 ❌	124	100 ✅	5400	5200 ✅
83 - Phase A - Initiation	20	12 ❌	41	43 ⚠️	200	300 ❌
82 - Phase F - Post-deployment	28	16 ❌	194	104 ✅	2800	2700 ✅
82 - Phase E - Deployment	23	14 ❌	58	37 ✅	66000	41900 ✅
82 - Phase D - Testing	5	3 ❌	102	102 ✅	5600	23300 ❌
82 - Phase C - Development	29	19 ❌	20	13 ✅	21000	21800 ⚠️

Issues By Region





Gantt



Project Progress & Delays Gantt

+ Espagne

Jan 2018 Apr 2018 Jul 2018 Oct 2018 Jan 2019 Apr 2019 Jul 2019 Oct 2019 Jan 2020 Apr 2020 Jul 2020 Oct 2020 Jan 2021

+ Equateur



- Afrique du Sud

5 - Phase 1 - Planning



Severely Delayed

5 - Phase 2 - Initiation



Ahead of Schedule

5 - Phase 3 - Implementation



Ahead of Schedule

5 - Phase 4 - Manufacturing



Ahead of Schedule

90 - Phase A - Initiation



Severely Delayed

85 - Phase A - Initiation



Ahead of Schedule

85 - Phase B - Preparation



Severely Delayed

90 - Phase B - Preparation



On Time

85 - Phase C - Development



Ahead of Schedule

90 - Phase C - Development



85 - Phase D - Testing



Project Type

- IT - CRM Implementation
- Marketing - Launch of new product

Filter By Duration

All

Project ID

All



Q&A



Ask a question about your data

Try one of these to get started

region by no issues

region by issues cost

region by delay

top region by alert for less deliverables

top countries by alert for less deliverables

Show all suggestions

General Director's Dashboard



No Role Selected

Filters

SanitORAL



Map



All Alerts



Over Budget



Less Deliverables



Delayed



Select a filter to see more



General Director's Dashboard



No Role Selected

Filters



Map



All Alerts Over Budget Less Deliverables Delayed

All Alerts



General Director's Dashboard



No Role Selected

Filters

SanitORAL



Map



Charts

All Alerts Over Budget



COUNTRY	→	France
REGION	→	Europe
ALERTS	→	16 (80%)
Phases OK	→	4 (20%)
Over Budget	→	8
Less Deliverables	→	9
Delayed	→	6
TOT Projects	→	4
TOT Phases	→	20

Alerts
Less Deliverables

General Director's Dashboard



No Role Selected

Filters



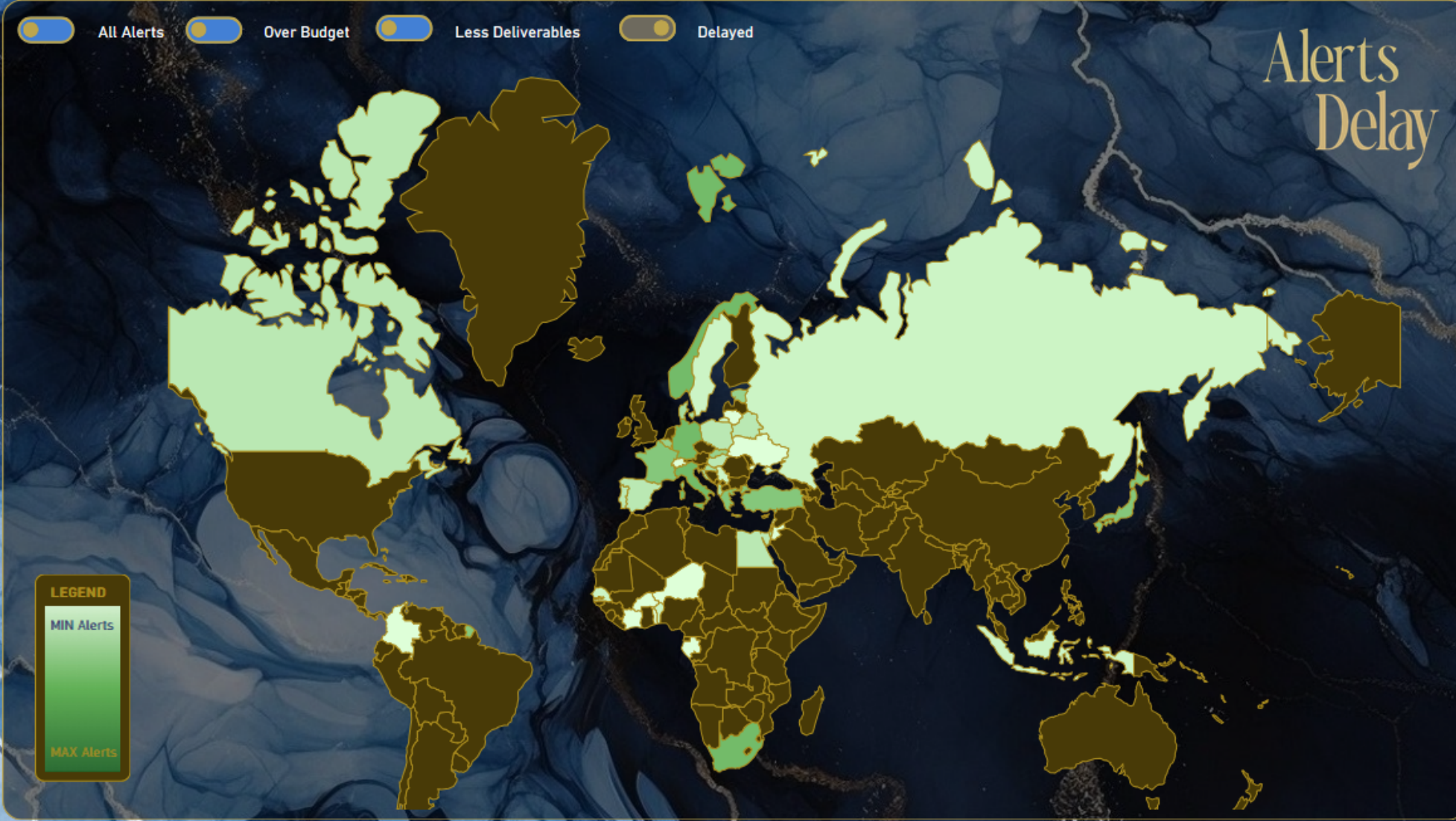
Map



Charts

- All Alerts
- Over Budget
- Less Deliverables
- Delayed

Alerts Delay



General Director's Dashboard

No Role Selected

Filters

SanitORAL

Multiple Selections with CTRL + click

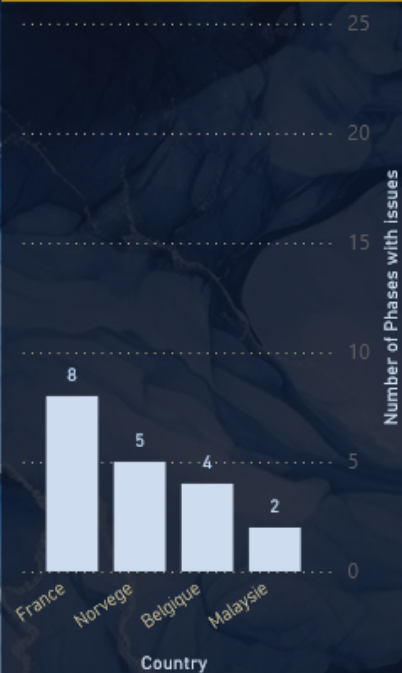


Charts

Country

Multiple selections

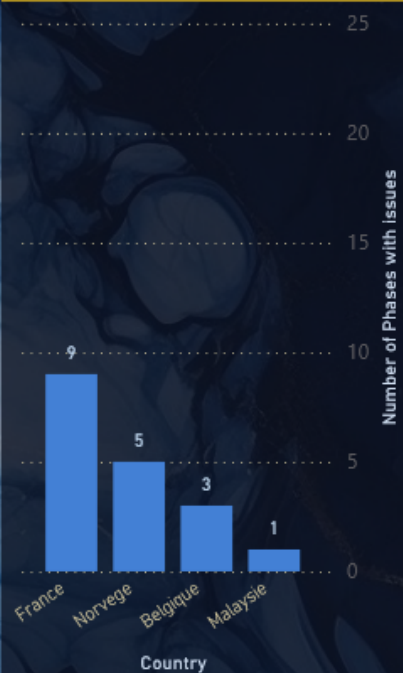
Alerts for Over Budget +15%



Country

Multiple selections

Alerts for Less Deliverables (-15%)



Country

Multiple selections

Alerts for Delay +15%



Country

Multiple selections

Totale of Phases

